

THANK YOU!



Thank you so much for downloading this resource. I really hope you find it helpful. For best results, be sure to read any additional printing instructions or tips included within the document.

If you have any questions please feel free to email me at admin@childhood101.com.

Click on the icons below to find our latest learning resources over at childhood101.com, sign up for my email, or to stay in touch via social media.

Best wishes, Christie

STOP BY AND SAY HI!



General Printing Instructions

Be sure to select 'Fit to printable area' (or similar) to ensure the page fits with your printer type and local paper size. Please also check your paper orientation setting.

We suggest printing re-usable game boards and game pieces onto matte photo paper or card stock and laminating before use.

If you are experiencing difficulties with the document printing, please ensure you are opening the PDF in Adobe Acrobat and not printing from a web browser or other Preview program. If you are using an older version of Acrobat, you might need to update to a newer version of the software. If the problem persists, please check the settings within Acrobat as you print by selecting File -> Print -> Advanced -> Print as Image.

Terms of Use

All rights reserved by author.

Purchase of this download is for one individual only. Teachers and educators may reproduce the pages in limited quantities for students within their own classroom only. Duplication for multiple classrooms, an entire school or district, is strictly prohibited. Copying any part of this product and placing it on the internet or an intranet is a violation of the Digital Millennium Copyright Act.

You may not use any part of this content for commercial purposes - that includes selling the document, giving it away to promote your business or website, or printing the file to sell. You may not share, loan or redistribute these documents. Duplication of this file or any other Childhood 101 files is forbidden and violates copyright law.

Thank you for respecting my work.



Chinese New Year

PRINTABLE ACTIVITIES



childhood 101
PLAYING | LEARNING | GROWING

quality resources for engaged learning



CHINESE NEW YEAR

Chinese New Year is also known as the Spring Festival. It has no set date; occurring between January 21 and February 20 each year according to the Lunar Calendar. Chinese New Year is the country's longest and most important festival, and it can be traced back 3500 years. Over the years, the holiday has evolved in many ways.

Chinese New Year Legend

According to one legend, Chinese New Year was inspired by a monster named Nian (Nian means year) who would attack people at the beginning of each year.

The people discovered that the monster was terrified of loud noises, the color red and bright lights, which were later used to drive it away. This continued year after year, until it became a tradition and an official holiday that is still celebrated today.

Chinese New Year is celebrated by people from many Asian countries including Indonesia, Malaysia, Singapore, North and South Korea and the Philippines.

Chinese New Year Traditions



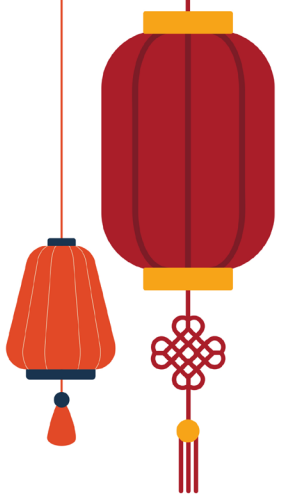
In China, red represents fire and is associated with positivity, happiness, beauty and good fortune. When Chinese New Year begins, red decorations such as lanterns and paper cuttings can be found everywhere.



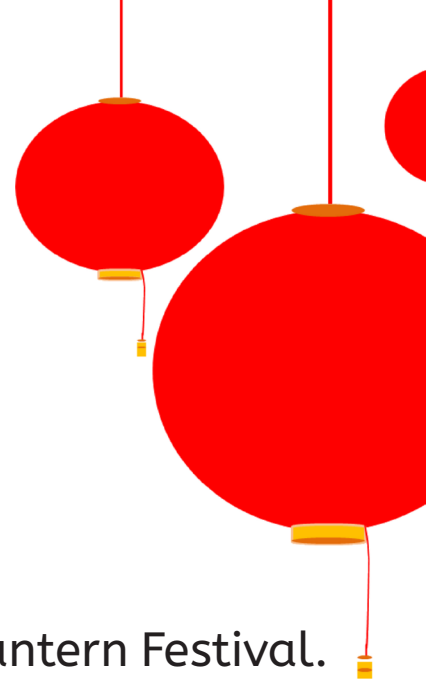
Because Chinese New Year is a holiday every family gathers for a feast. Every dish served represents a special meaning or symbol, from its preparation to the serving, and even eating. Fish, dumplings, spring rolls, oranges and tangerines, rice balls and noodles, and nian gao - a Chinese New Year cake.



Chinese people also watch street activities such as dragon and lion dance performances. People dressed in red dance and there are loud firecrackers and fireworks.



LANTERN FESTIVAL



Each year Chinese New Year concludes with the Lantern Festival.

According to legend, the Lantern Festival began when a beautiful, heavenly bird flew down to earth and was killed by the villagers who lived there. The bird was favored by the divine Jade Emperor who decided to punish the villagers by burning their village to the ground.

Warned of the impending punishment by the emperor's daughter, the people panicked until an old, wise villager suggested they hang red lanterns outside their homes and set up bonfires on the streets, so that the village would appear to already be on fire.

The plan worked and the village was saved from destruction, and from that day forward the people of China have observed the Lantern Festival by hanging lanterns and exploding firecrackers. Many families create beautiful lanterns to display outside for all to see. The lanterns often have riddles written on them for spectators to solve.

FACTS ABOUT CHINESE NEW YEAR

- Chinese New Year was first celebrated over three thousand years ago.
- Each year on the Chinese calendar is represented by one of twelve zodiac animals. In order, the animals are rat, ox, tiger, rabbit, dragon, snake, horse, goat, monkey, rooster, dog and pig.
- It is forbidden to wash, sweep or clean on the first day of Chinese New Year as completing these activities risks washing or sweeping away good luck.
- The date of Chinese New Year varies from year to year according to the Lunar Calendar.
- The Lunar Calendar is a calendar that uses the monthly cycles of the phases of the moon to measure time, usually measuring the time from new moon to new moon as one month.
- Before firecrackers, Chinese people burned bamboo. The sound of the bamboo crackling was believed to drive away evil spirits.
- People enjoy Chinese New Year, especially children, because they wear new clothes to symbolize a new beginning and receive red envelopes containing money, known as hong bao, as gifts.
- The Cantonese greeting for Chinese New Year is 'Kung hei fat choi.'



CHINESE ZODIAC





CHINESE ZODIAC

Find your birth year to determine your Chinese zodiac sign. Complete some research on your zodiac animal to find the unique traits (according to Chinese legend) associated with that animal.

Take a look at the chart below to find your zodiac animal!

Rat - 1924, 1936, 1948, 1960, 1972, 1984, 1996, 2008, 2020

Ox - 1925, 1937, 1949, 1961, 1973, 1985, 1997, 2009, 2021

Tiger - 1926, 1938, 1950, 1962, 1974, 1986, 1998, 2010, 2022

Rabbit - 1927, 1939, 1951, 1963, 1975, 1987, 1999, 2011, 2023

Dragon - 1928, 1940, 1952, 1964, 1976, 1988, 2000, 2012, 2024

Snake - 1929, 1941, 1953, 1965, 1977, 1989, 2001, 2013, 2025

Horse - 1930, 1942, 1954, 1966, 1978, 1990, 2002, 2014, 2026

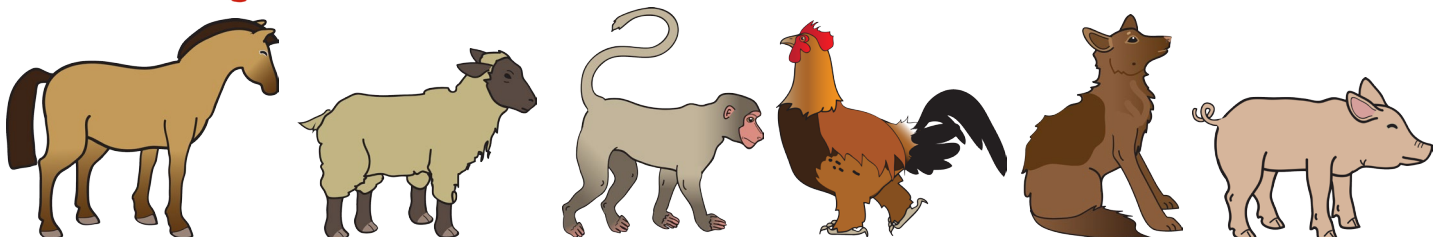
Goat - 1931, 1943, 1955, 1967, 1979, 1991, 2003, 2015, 2027

Monkey - 1932, 1944, 1956, 1968, 1980, 1992, 2004, 2016, 2028

Rooster - 1933, 1945, 1957, 1969, 1981, 1993, 2005, 2017, 2029

Dog - 1934, 1946, 1958, 1970, 1982, 1994, 2006, 2018, 2030

Pig - 1935, 1947, 1959, 1971, 1983, 1995, 2007, 2019, 2031



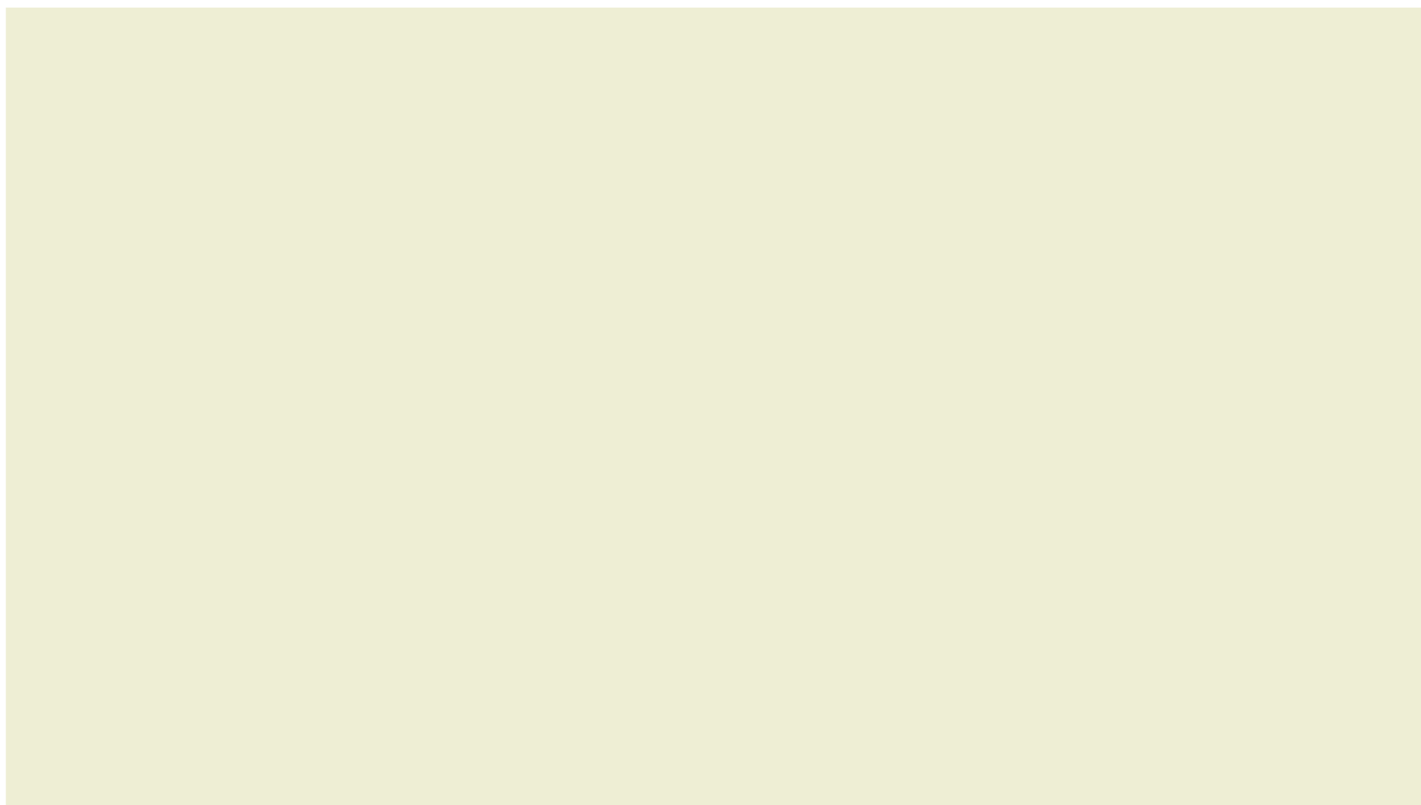
My Chinese Zodiac Sign

Research and explain the significance of each of the following items to Chinese New Year celebrations.



CREATE YOUR OWN LANTERN DESIGN AND EXPLAIN ITS SYMBOL AND MESSAGE

DRAW YOUR LANTERN HERE



EXPLAIN THE MESSAGE OF YOUR LANTERN HERE

Share the story of the legend of the monster, Nian.

This image shows a blank sheet of white paper with horizontal ruling lines. The lines are evenly spaced and extend across the width of the page. There are no margins, text, or other markings on the paper.